

**SKYJACK**™



**ZB8044** | 8,000 lb. Capacity, 44 ft. Lifting Height



**ZOOM BOOM SERIES**

**Telescopic** MATERIAL HANDLER

# ZOOM BOOM SERIES ZB8044

## DIMENSIONS

Wheelbase.....	120"	305 cm
Overall width.....	101"	257 cm
Overall height.....	94"	239 cm
Overall length (less forks).....	239"	607 cm
Ground Clearance.....	19"	48 cm
Total weight (approx.).....	24,200 lb	10,977 kg
Turn radius.....	141"	358 cm
Frame level.....	+/-11 Degrees	

## SPECIFICATIONS

Engine.....	Cummins, QSB 4.5 electronic, turbocharged diesel, 110 horsepower @ 2500 rpm
Transmission.....	Electronic powershift, 4 speed forward and 2 speed reverse Speed range - 3.7-22 mph (6-35 km/h)
Axles.....	Steerable outboard planetary
Brakes.....	Service - Differential mounted wet disc brakes on both axles Parking - Differential mounted S.A.H.R. wet disc
Tire.....	14.00 x 24 - 12 ply grader lug tubeless
Steering.....	2 wheel, 4 wheel, crab
Boom.....	3 section, welded construction Maximum lift height - 44' (1341 cm) Maximum forward reach - 30' (914 cm) Dual shaft type carriage Carriage rollback - 22 degrees Carriage forward tilt - 79 degrees
Forks.....	2.25" x 4" x 48" [5.7 cm x 10.2 cm x 122 cm]
General.....	Fuel/hydraulic oil tank - 41 US gal. (155L) Hydraulic pump - 36 gpm @ governed rpm 12 volt - 95 amp. alternator

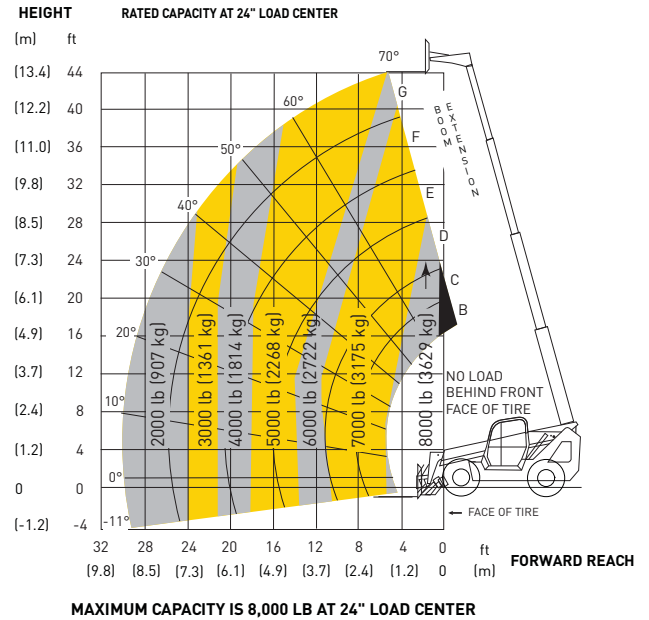
## STANDARD EQUIPMENT

- Pilot-operated joystick boom & frame level controls
- 4 wheel power steering
- Electronic dash and gauge instrumentation
- Hydraulic frame leveling
- Capacity chart
- Automatic self-leveling forks
- Front axle mounted differential lock
- Engine block heater
- Quick disconnect carriage
- ROPS/FOPS operator compartment
- Lockable fuel cap, and engine compartments
- Service and park brake activated transmission disconnect
- Anti-restart keyed ignition switch with neutral start
- Swing up engine doors
- Tilt adjustment of console mounted joystick controls
- Hydraulic tank mounted sight level and temperature gauge
- Right-hand arm rest
- Adjustable suspension seat
- Retractable seat belt
- Anti-freeze
- Electric horn
- Anti-skid floor steps
- Reverse warning alarm
- Yellow paint with black trim
- Over center lock valves on all hydraulic functions
- Electronic foot throttle
- External rear view mirrors
- Two stage air cleaner
- 4 wheel drive
- Automatically activated S.A.H.R. parking brake
- Operator selectable, brake activated, automatic transmission disconnect system
- Rear axle "stable-lock" cylinder
- Tank mounted return filter
- Tank mounted hydraulic sump pickup filter
- Rubber isolated cab mount

## OPTIONAL EQUIPMENT

- Various carriage/fork sizes
- Enclosed operator cab
- 12' Jib boom
- Turn signals/lights
- Side tilt carriage
- Foam filled tires
- Working lights
- Swing carriage
- Fenders
- Flashing beacon
- Dual batteries
- Air conditioning
- Fork positioner
- Material bucket
- Outriggers
- Auxiliary hydraulics
- Winch
- Mine code specification

## CAPACITY CHART



- Machine design complies with ASME/ANSI B56.6 stability requirements for rough terrain forklifts.
- For attachments consult factory for load rating.
- Read boom angle and boom extension, then determine allowable load from chart.
- Figures shown are stacking capacity with truck level on a firm surface and with properly inflated tires.
- Do not exceed rated loads as dangerous and unstable machine conditions will result.

## IMPORTANT

- All capacities rated on firm ground, with the machine steered straight and frame level.
- Always travel with boom retracted in the lowest possible position.
- Never position fork carriage behind front face of tire.

Note: This literature is for illustrative purposes only. Consult the Operating Maintenance and Parts Manuals for proper procedures. Specifications are nominal and subject to change without notice.



55 Campbell Rd. Guelph, ON Canada N1H 1B9  
Sales Inquiries: 1-877-755-4387 (1-877-SJLIFTS)  
Main Switchboard: 1-800-265-2738  
Phone: 519-837-0888  
Fax: 519-837-8104  
Email: skyjack@skyjack.com